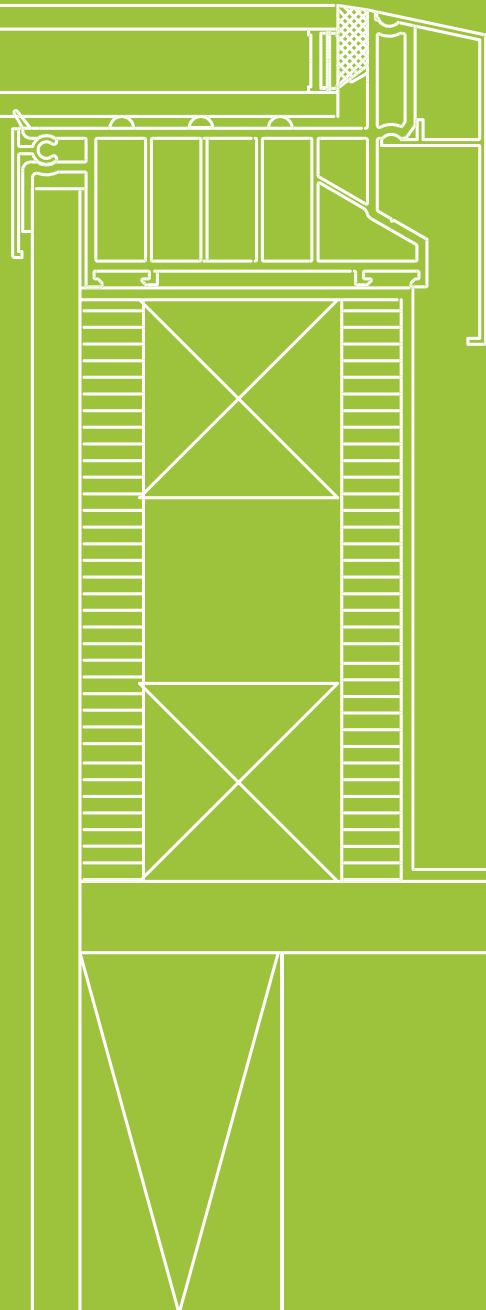


VUFOLD®

ROOFLIGHT INSTALLATION MANUAL



Sales: sales@vufold.co.uk
Customer Service: aftercare@vufold.co.uk
Telephone: 01625 442899

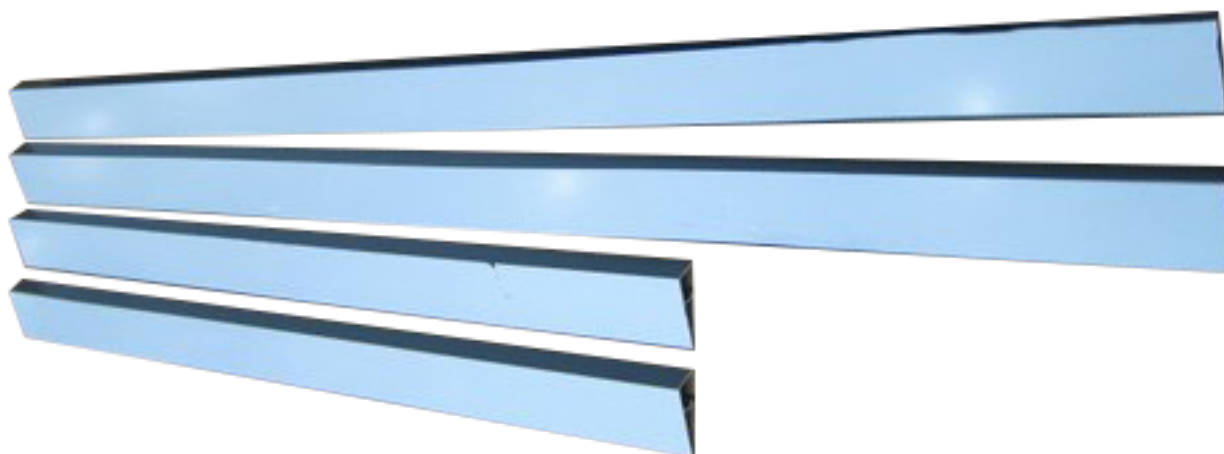
VFRIM ISSUE A

PARTS LIST

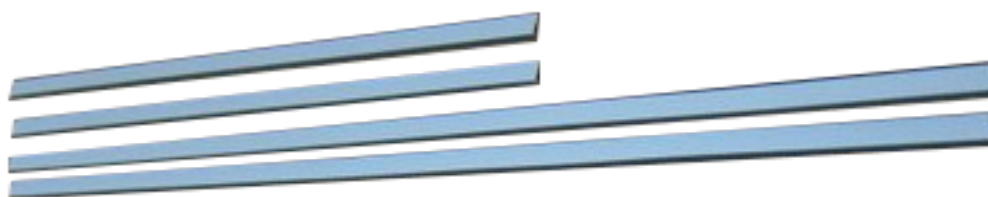
1 x GLAZED ROOFLIGHT



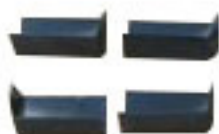
4 x EXTERNAL CLADDING



4 x INTERNAL CLADDING



4 x CORNER TRIMS

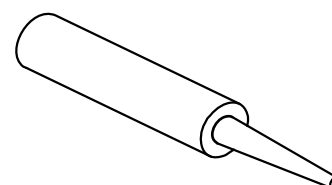


30 x 6MM x 80MM WOOD SCREWS

Depending on the size of your Rooflight you may have screws left over.



1 x CARTRIDGE SILICONE SEALANT



TOOLS YOU'LL NEED



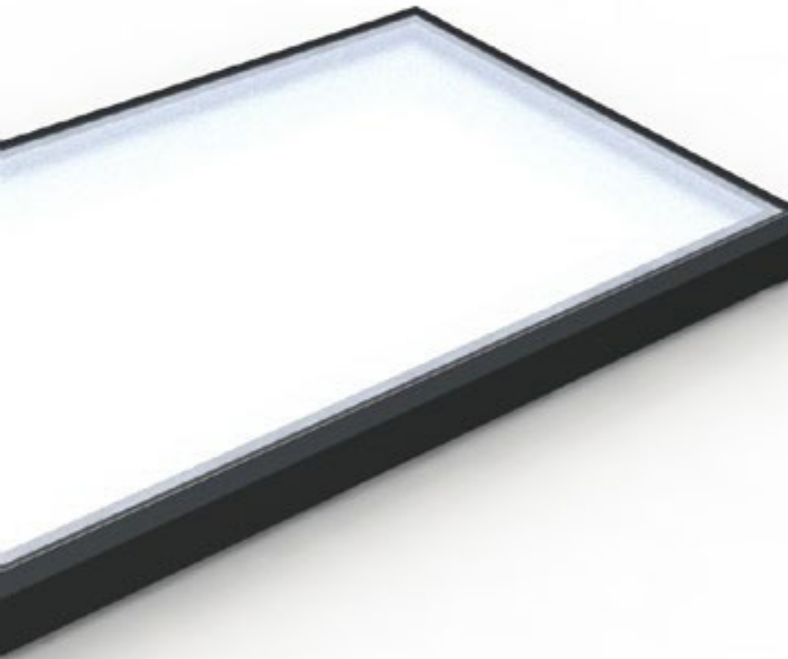
SEALANT GUN



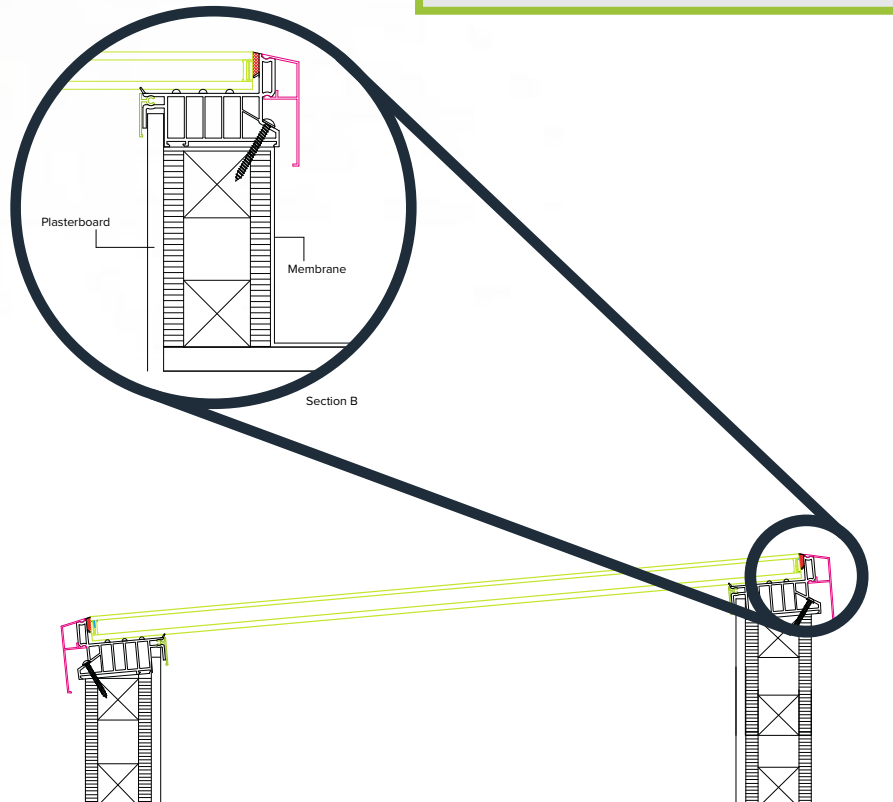
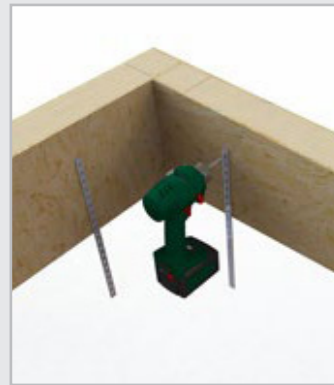
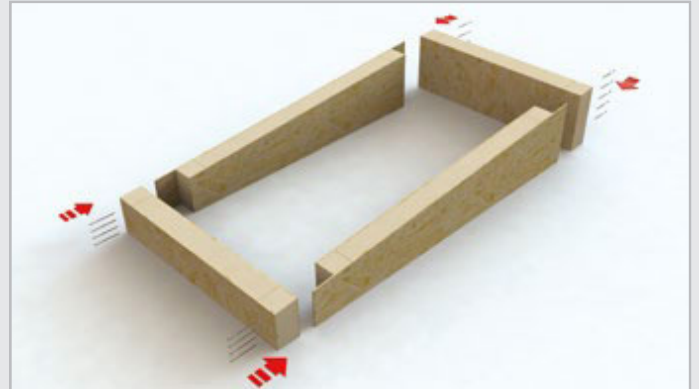
BATTERY DRIVER



RUBBER MALLET

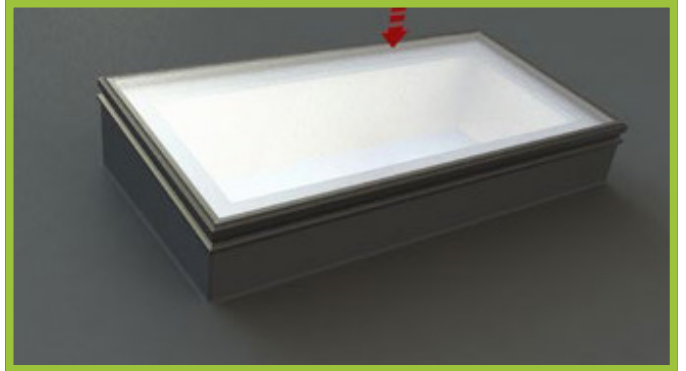


If a Vufold kerb is specified, assemble the kit and fix to the roof deck. Secure the Vufold kerb to the host structure using appropriate steel fixing straps (not supplied). Cover the roof and kerb with an appropriate weatherproof membrane. If not using a Vufold kerb, we recommend installing the roof at a minimum 5 degree pitch.





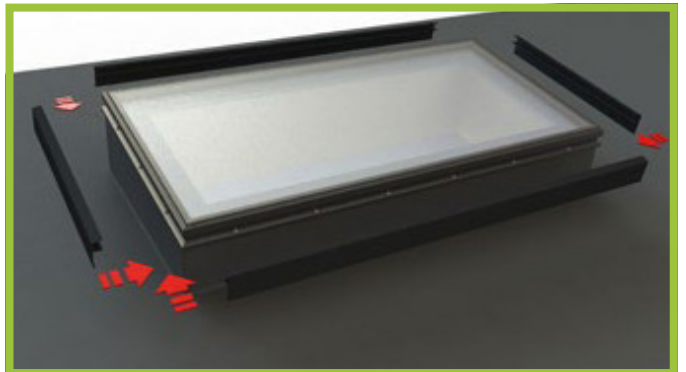
1 Run a continuous bead of sealant around the perimeter of the kerb for the frame to sit on.



2 Position the Rooflight onto the kerb. Make sure it's central to achieve an even distance around the kerb.



3 Screw the Rooflight onto the kerb using the 6mm x 80mm screws provided through the pre drilled holes.



4 Fit the external cladding positioning centrally. A rubber mallet may be required.



5 Fit the corner trims by hooking them under the external cladding, rotating them over and applying sealant to secure them into place.



6 After the internal plasterboard is fitted, tap the internal cover trims into the frame using a rubber mallet. Note: Fit the two opposite trims that are the internal size of the frame first and then fit the remaining two trims between them.